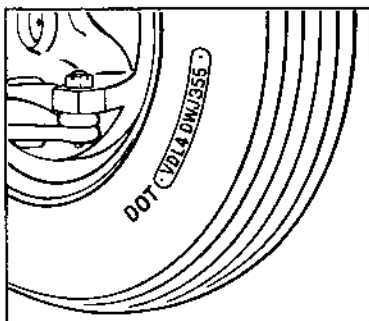


HOW CAN I IDENTIFY A RECALLED TIRE?

First, compare your tires' tread pattern with the pictures shown. Are they five-rib tires or seven-rib tires? Next, determine when the tire was made by checking the DOT number on the tire sidewall (on the inside sidewall of whitewall tires). This picture will help you identify the DOT numbers on your tires. The last three digits of the DOT number identify the week and year of manufacture. For example, 355 translates as the thirty-fifth week of 1975.



The following tires are eligible for free replacement without proof of the purchase date unless the conditions warranting exclusion specified under "What Conditions Warrant Exclusions" below are present:

(a) Steel Belted Radial 500 (5-rib) tires with serial numbers ending in the following digits:

355 365 375 385 395 405 415 425 435 445 455 465
475 485 495 505 515 525 016 026 036 046 056 066
076 086 096 106 116 126 136 146 156 166 176 186
196 206 216 226 236 246 256 266 276 286 296 306
316 326 336 346 356 366 376 386 396 406 416 426
436 446 456 466 476 486 496 506 516 526

(b) Steel Belted Radial 500 (7-rib) tires and Firestone TPC tires with serial numbers ending in the following digits:

355 365 375 385 395 405 415 425 435 445 455 465
475 485 495 505 515 525 016 026 036 046 056 066
076 086 096 106 116 126 136 146 156 166 176

(c) 5-rib and 7-rib Steel Belted Radial 500 tires (replacement tires) that were manufactured from March 1, 1975, through August 31, 1975, and which are not mounted on 1975 model vehicles. These tires will have serial numbers ending with the following digits:

095 105 115 125 135 145 155 165 175 185 195 205 215
225 235 245 255 265 275 285 295 305 315 325 335 345